

Eaton® Beverage Hose & Tubing

Dispensing Solutions



Powering Business Worldwide

Regardless of your beverage dispensing requirements...

Table of Contents

Synflex Taste-Rite® Braided Barrier
Hose and Tubing.....4



Eaton Flo-Guard Barrier
Hose and Tubing.....5



Eaton Food Grade
PVC Tubing.....6



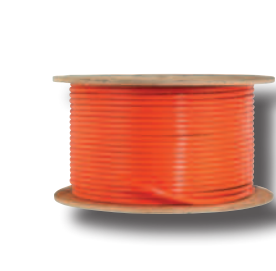
Eaton Food Grade
Braided PVC Hose.....7



Eaton PVC
Drain Tubing.....8



Eaton Non-Barrier Braided
Hose and Tubing.....9



Non-Insulated Cabled
Beverage Bundles..... 10




Insulated
Beverage Bundles..... 10



Custom and Specialty
Products..... 11



we have the solution.



With the addition of the Arrow Flo-Guard® products to the current Synflex® product offering, Eaton has firmly established itself as the leader in beverage dispensing hose and tubing products. Decades of polymer science experience has put us at the forefront of material development, new product design and best-cost solutions. We offer a wide range of products and can provide the right solution for any application utilizing our standard product line or a customized solution. Our products eliminate the potential for external contamination, maintain flavor integrity, aid in fast flavor changeover and are impervious to gas permeation. Our application specific hose and tubing products are ideal for:

- Soft drink fountain systems
- Draught beer, liquor and wine systems
- Ice tea and fruit juice dispensing equipment
- Frozen carbonated drink systems
- Coffee and espresso machines
- Dairy product dispensing equipment
- Carbonated and non-carbonated water lines
- Condiment dispensing equipment
- Hot cheese dispensing equipment
- Carbon dioxide, nitrogen and mixed gas lines

All of our dispense products are manufactured under ISO 9001 certification and meet applicable industry standards including NSF-51, NSF-61, FDA, 3-A and ASTM E84-94.






Synflex™ Taste-Rite Braided Hose and Tubing








Taste-Rite hose and tubing products employ a modified PET[®] barrier bonded to a special polyolefin alloy. This modified PET contact layer offers a mirror smooth, no-porous contact surface which enables total flushability, improves flow and minimizes microbial growth. It also insures flavor integrity and eliminates the potential for pungent flavor migration and external contamination. In addition, this barrier construction provides optimal resistance to carbon dioxide, nitrogen, oxygen and mixed gas permeation.

- NSF-51, NSF-61 and SK listed
- Temperature Range:
-10°F - 150°F (-23°C - 65°C)
- Major soft drink manufacturer approved
- RoHS compliant
- Available for shipment out of the Eaton Aurora, OH facility



#													
Hose Part Number	Nominal I.D.		Nominal O.D.		Min. Bend Radius		Min. Working Pressure @75°F		Weight per 100 ft		Standard Length		Clamp Size
	in	mm	in	mm	in	mm	psi	bar	lbs	kg	ft	m	mm
3227-31003	.265	6.7	.420	10.7	1.50	38.1	250	17.5	3.5	1.59	300	91.44	11.3
3227-31004	.265	6.7	.420	10.7	1.50	38.1	250	17.5	3.5	1.59	500	152.40	11.3
3227-41003	.375	9.5	.535	13.6	2.50	63.5	225	15.5	4.7	2.13	300	91.44	14.5
3227-41004	.375	9.5	.535	13.6	2.50	63.5	225	15.5	4.7	2.13	500	152.40	14.5
3227-61003	.510	13.0	.675	17.1	3.50	88.9	188	12.9	6.3	2.86	300	91.44	18.5

#													
Tube Part Number	Nominal I.D.		Nominal O.D.		Min. Bend Radius		Min. Working Pressure @75°F		Weight per 100 ft		Standard Length		Clamp Size
	in	mm	in	mm	in	mm	psi	bar	lbs	kg	ft	m	mm
4227-06004	.265	6.7	.375	9.5	1.70	43.2	120	8.3	2.3	1.04	500	152.40	10.5
4227-08004	.375	9.5	.500	12.7	2.13	54.1	100	6.9	3.6	1.63	500	152.40	14.0
4227-10004	.500	12.7	.625	15.9	3.25	82.6	70	4.8	4.5	2.04	500	152.40	17.0

Eaton Flo-Guard Braided Hose and Tubing

Eaton Flo-Guard hose and tubing products are constructed with a natural barrier inner core bonded to a modified copolymer cover. This combination allows for flavor protection and allows for reuse after cleaning. This barrier combination also allows for maximum flexibility, kink resistance and ease of installation in confined areas. It can also be permanently thermoformed in order to increase routing efficiency and reduce fitting usage.

- NSF-51, NSF-61 and SK listed
- Materials Comply with FDA Specifications
- RoHS compliant
- Temperature Range:
-40°F - 150°F (-40°C - 65°C)
- Available for shipment out of the
Eaton Guelph, ON facility



# Hose Part Number	Nominal I.D.		Nominal O.D.		Min. Bend Radius		Min. Working Pressure @68°F		Weight per 100 ft		Standard Length		Clamp Size
	in	mm	in	mm	in	mm	psi	bar	lbs	kg	ft	m	mm
63-0400	.265	6.7	.517	13.1	1.5	38.1	300	20.7	6.5	2.95	500	152.40	14.5
63-0400-01	.265	6.7	.457	11.6	1.8	45.7	300	20.7	6.2	2.81	500	152.40	13.3
63-0600	.375	9.5	.635	16.1	2.0	50.8	300	20.7	9.0	4.08	300	91.44	17.0
63-0600-01	.375	9.5	.593	15.1	2.5	63.5	300	20.7	8.6	3.90	300	91.44	15.7

# Tube Part Number	Nominal I.D.		Nominal O.D.		Min. Bend Radius		Min. Working Pressure @68°F		Weight per 100 ft		Standard Length		Clamp Size
	in	mm	in	mm	in	mm	psi	bar	lbs	kg	ft	m	mm
58-0406-00	.265	6.7	.375	9.5	2.0	50.8	125	8.6	2.7	1.22	500	152.40	10.5
58-0608-00	.375	9.5	.500	12.7	3.0	76.2	100	6.8	3.7	1.68	500	152.40	14.0






Eaton Food Grade PVC Tubing



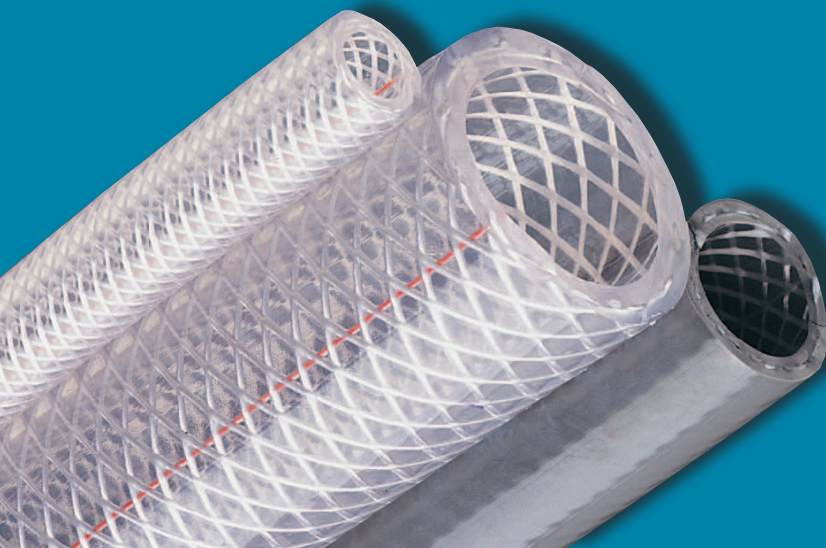
Eaton's line of PVC hose and tubing products are manufactured with materials which comply with FDA Regulation 21 CFR 177.1520 and are NSF-51 listed. These products are lightweight, non-marking and flexible. These are excellent products for food and beverage transfer lines, drain lines, sight gauges and light vacuum lines.

- Temperature Range:
-25°F - 150°F (-5°C - 65°C)
- RoHS compliant
- Available for shipment out of
the Eaton Guelph, ON and
Cleveland, TN facilities



# Part Number	 Nominal I.D.		 Nominal O.D.		 Min. Bend Radius		 Min. Working Pressure @68°F		 Weight per 100 ft		Standard Length		Clamp Size
	in	mm	in	mm	in	mm	psi	bar	lbs	kg	ft	m	mm
10-0204	.125	3.2	.250	6.4	.375	9.5	65	4.5	2.0	0.91	100	30.48	7.0
10-0305	.188	4.8	.313	7.9	.625	15.9	55	3.8	2.6	1.18	100	30.48	8.0
10-0406	.250	6.4	.375	9.5	1.000	25.4	55	3.8	3.2	1.45	100	30.48	10.5
10-0408	.250	6.4	.500	12.7	.625	15.9	60	4.1	7.6	3.45	100	30.48	14.0
10-0507	.313	7.9	.438	11.1	1.375	34.9	50	3.4	3.8	1.72	100	30.48	13.3
10-0608	.375	9.5	.500	12.7	1.750	44.5	45	3.1	4.5	2.04	100	30.48	14.0
10-0610	.375	9.5	.625	15.9	1.125	28.6	50	3.4	10.5	4.76	100	30.48	17.0
10-0810	.500	12.7	.625	15.9	2.875	73.0	30	2.1	5.7	2.59	100	30.48	17.0
10-0811	.500	12.7	.688	17.5	2.125	54.0	40	2.8	9.0	4.08	100	30.48	19.2
10-0812	.500	12.7	.750	19.1	1.750	44.5	45	3.1	13.0	5.90	100	30.48	19.8
10-1013	.625	15.9	.813	20.6	2.375	60.3	35	2.4	11.0	5.00	100	30.48	22.6
10-1014	.625	15.9	.875	22.2	2.375	60.3	40	2.8	13.0	5.90	100	30.48	24.1
10-1216	.750	19.1	1.000	25.4	3.250	86.8	35	2.4	18.0	8.16	100	30.48	27.1
10-1418	.875	22.2	1.125	28.6	4.125	104.8	30	2.1	21.0	9.53	100	30.48	30.8
10-1620	1.000	25.4	1.250	31.8	5.125	130.2	25	1.7	23.0	10.43	100	30.48	33.1
10-2024	1.250	31.8	1.500	38.1	7.375	187.3	20	1.4	28.0	12.70	100	30.48	38.1
10-2432	1.500	38.1	2.000	50.8	5.875	149.2	35	2.4	72.0	32.70	100	30.48	51.5
10-3240	2.000	5.8	2.500	63.5	9.375	238.1	35	2.4	92.0	41.73	100	30.48	65.0

Eaton Food Grade Braided PVC Hose



Eaton's line of PVC hose and tubing products are manufactured with materials which comply with FDA Regulation 21 CFR 177.1520 and are NSF-51 listed. These products are non-toxic and RoHS compliant. They are manufactured with a spiraled polyester yarn reinforcement and are longitudinally reinforced with a tracer yarn to reduce elongation under pressure. Applications include air lines, water lines, food and beverage dispensing, potable water transfer and pneumatic applications.

- Temperature Range: -25°F - 150°F (-5°C - 65°C)
- RoHS compliant
- Available for shipment out of the Eaton Guelph, ON and Cleveland, TN facilities



# Part Number	Nominal I.D.		Nominal O.D.		Min. Bend Radius		Min. Working Pressure @68°F		Weight per 100 ft		Standard Length		Clamp Size
	in	mm	in	mm	in	mm	psi	bar	lbs	kg	ft	m	mm
20-0300-00	.188	4.8	.375	9.5	.750	19.1	250	17.5	4.5	2.04	300	91.44	10.5
20-0400-00	.250	6.4	.460	11.7	1.500	38.1	250	17.5	6.5	2.95	300	91.44	13.3
20-0500-00	.313	7.9	.525	13.3	1.750	44.5	250	17.5	7.5	3.40	300	91.44	14.5
20-0600-00	.375	9.5	.600	15.2	2.000	50.8	225	15.5	9.0	4.08	300	91.44	16.6
20-0800-00	.500	12.7	.750	19.1	2.125	54.0	200	13.8	14.5	6.58	300	91.44	19.8
20-1000-00	.625	15.9	.875	22.2	2.375	60.3	200	13.8	16.5	7.48	300	91.44	24.1
20-1200-00	.750	19.1	1.030	26.2	3.250	86.6	150	10.3	23.0	10.43	300	91.44	28.6
20-1600-00	1.000	25.4	1.312	33.3	3.750	95.3	125	8.6	32.0	14.51	200	60.96	34.6
20-2000-00	1.250	31.8	1.687	42.8	5.500	139.7	100	6.9	58.0	26.31	100	30.48	44.0
20-2400-00	1.500	38.1	1.937	49.2	5.875	149.2	100	6.9	69.0	31.30	100	30.48	51.5
20-3200-00	2.000	50.8	2.500	63.5	6.875	174.6	75	5.2	100.0	45.40	100	30.48	65.0

Eaton PVC Drain Tubing



Eaton offers a full line of PVC tubing products for use as drain lines, water transfer lines and conduit. These products are manufactured with industrial grade PVC materials and are light weight and non-marking. We provide both mono-wall tube and corrugated drain tubing. The rigid exoskeleton on our corrugated product provides a virtually crush proof feature and the product will not collapse. It offers a fantastic bend radius for tight turns.

- Temperature Range: -5°C to +65°C (+25°F to +150°F)
- Available for shipment out of the Eaton Guelph, ON, Aurora, OH & Cleveland, TN facilities



Grey Drain Tubing

# Part Number	Nominal I.D.		Nominal O.D.		Min. Bend Radius		Min. Working Pressure @68°F		Weight per 100 ft		Standard Length		Clamp Size
	in	mm	in	mm	in	mm	psi	bar	lbs	kg	ft	m	mm
16-0812-03	.500	12.7	.750	19.1	1.750	44.5	45	3.1	14.07	6.38	100	30.48	19.8
16-1014-03	.625	15.9	.875	22.2	2.375	60.3	40	2.8	16.65	7.55	100	30.48	24.1
16-1216-03	.750	19.1	1.000	25.4	3.250	86.6	35	2.4	19.57	8.87	100	30.48	27.1
16-1620-03	1.000	25.4	1.250	31.8	5.125	130.2	25	1.7	25.61	11.61	100	30.48	33.1

Corrugated Drain Tubing

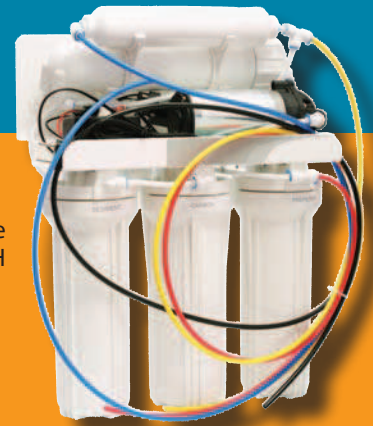
# Part Number	Nominal I.D.		Nominal O.D.		Min. Bend Radius		Min. Working Pressure @68°F		Weight per 100 ft		Standard Length		Clamp Size
	in	mm	in	mm	in	mm	psi	bar	lbs	kg	ft	m	mm
CD-12	.750	19.1	1.080	27.43	1.000	25.4	100	6.9	27.0	12.2	100	30.48	28.6
CD-16	1.000	25.4	1.300	33.02	1.500	38.1	100	6.9	27.0	12.2	100	30.48	34.6

Eaton Non-Barrier Braided Hose and Tubing



Eaton's line of non-barrier hose and tubing products are manufactured with LLDPE contact materials which comply with FDA Regulation 21 CFR 177.1520 and are NSF-51 listed. These products provide excellent stress crack resistance and are excellent products for air, water and food transfer lines where flushability and barrier protection is not required.

- Temperature Range: -50°F - 150°F (-45°C - 65°C)
- Available for shipment out of the Eaton Guelph, ON & Aurora, OH facilities



Eaton White-Line Non-Barrier Braided Hose

#													
Part Number	Nominal I.D.		Nominal O.D.		Min. Bend Radius		Min. Working Pressure @75°F		Weight per 100 ft		Standard Length		Clamp Size
	in	mm	in	mm	in	mm	psi	bar	lbs	kg	ft	m	mm
60-0400-05	.265	6.7	.420	10.7	1.25	31.8	250	17.5	3.5	1.59	500	152.40	11.3
60-0400-01	.265	6.7	.465	11.8	1.50	38.1	250	17.5	4.2	1.90	500	152.40	13.3
60-0600-05	.375	9.5	.535	13.6	1.75	44.5	225	15.5	4.7	2.13	300	91.44	14.5
60-0650-00	.375	9.5	.597	15.2	2.00	50.8	225	15.5	7.4	3.36	500	152.40	15.7
60-0800-05	.510	13.0	.675	17.1	2.25	57.2	188	12.9	6.3	2.86	300	91.44	18.5

Eaton Blue-Line Non-Barrier Braided Hose

Part Number	Nominal I.D.		Nominal O.D.		Min. Bend Radius		Min. Working Pressure @75°F		Weight per 100 ft		Standard Length		Clamp Size
	in	mm	in	mm	in	mm	psi	bar	lbs	kg	ft	m	mm
60-0406-05	.265	6.7	.465	11.8	1.50	38.1	250	17.5	4.2	1.90	500	152.40	13.3
60-0606-03	.375	9.5	.597	15.2	2.00	50.8	225	15.5	7.4	3.36	300	91.44	15.7

NSF-51 Poly Tubing

Part Number	Nominal I.D.		Nominal O.D.		Min. Bend Radius		Min. Working Pressure @68°F		Weight per 100 ft		Standard Length		Clamp Size
	in	mm	in	mm	in	mm	psi	bar	lbs	kg	ft	m	
51-0406-00	0.250	6.4	0.375	9.5	1.25	31.8	125	8.6	2.3	1.04	500	152.40	10.5
51-0608-00	0.375	9.5	0.500	12.7	2.50	63.5	100	6.9	3.6	1.63	500	152.40	14
51-0810-00	0.500	12.7	0.625	15.9	4.00	101.6	75	5.2	4.6	2.09	500	152.40	17

Non-Insulated Cabled Beverage Bundles

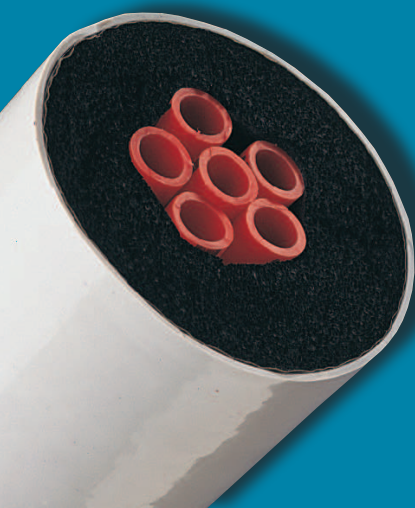


Eaton Cabled Barrier Bundles are ideal for applications requiring beverages to be conveyed at ambient temperatures. Our non-insulated bundles are constructed of a cabled core of tubing or hose, wrapped with a vapor barrier taped and jacketed with a PVC sheath. This construction provides the ultimate in barrier protection coupled with excellent overall bundle flexibility. Our bundles are available in a variety of hose and tube combinations and can be manufactured utilizing any of Eaton's Taste-Rite, Flo-Guard and non-barrier single line products.

- Temperature Range: Dependent on tubes/hose
- Available for shipment out of the Eaton Guelph, ON & Aurora, OH facilities



Insulated Cabled Beverage Bundles



Eaton Insulated Bundles are ideal for applications where beverage temperature must be controlled in a precise and accurate manner. Our bundles are constructed with a core of hose/tubing for product and recirculation lines. The core is then wrapped with cling and aluminum tapes in order to seal the bundle core which protects against conductive heat loss. The construction is then insulated with closed-cell foam insulation and either wrapped with a PVC tape or a PVC extruded sheathing. Our bundles are available in a variety of hose and tube combinations and can be manufactured utilizing any of Eaton's Taste-Rite, Flo-Guard and non-barrier single line products.

- Temperature Range: Dependent on tubes/hose
- Available for shipment out of the Eaton Guelph, ON & Aurora, OH facilities

Specialty and/or Custom Products



Eaton offers an extensive range of customized products we have created to address the demanding needs of our customers. Check out some of these options, or, if you have an idea, give us a call to find out how Eaton can provide a customized beverage solution for you.

- Coatings over existing product
- Insulated copper tubes
- Custom bundles and foamed tubing
- Custom colored suction hose
- Specialty materials manufactured into custom hose
- Reinforced hose with colored tracers
- Corrugated tubing
- Insulated tubing
- Profile extrusions
- Straps, bands
- Multiple products welded together
- Thermoforming



Eaton
Hydraulics Business USA
14615 Lone Oak Road
Eden Prairie, MN 55344
USA
Tel: 952-937-9800
Fax: 952-294-7722
www.eaton.com/hydraulics

Eaton
Hydraulics Business Europe
Route de la Longeraie 7
1110 Morges
Switzerland
Tel: +41 (0) 21 811 4600
Fax: +41 (0) 21 811 4601

Eaton
Hydraulics Business Asia Pacific
11th Floor Hong Kong New World Tower
300 Huaihai Zhong Road
Shanghai 200021
China
Tel: 86-21-6387-9988
Fax: 86-21-6335-3912

Eaton
Eaton Business USA
115 Lena Dr.
Aurora, OH 44202
USA
Tel: 330-562-9111
Toll Free: 800-837-1467
Fax: 330-274-0473

Eaton
49 Cutten Place
Guelph, Ontario N1G4Z7
Canada
Tel: 519-836-5575
Toll Free: 877-662-8823
Fax: 519-836-5412



Powering Business Worldwide

© 2009 Eaton Corporation
All Rights Reserved
Printed in USA
Document No. E-HOOV-MR002-E1
Supersedes E-HOOV-MR002-E
January 2009